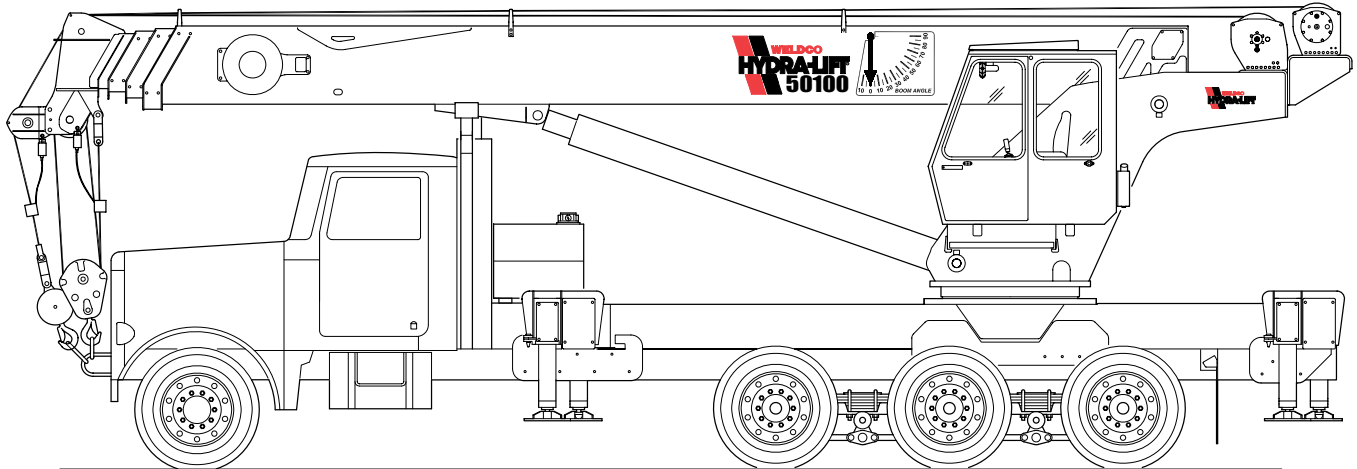


# WHL50TC100

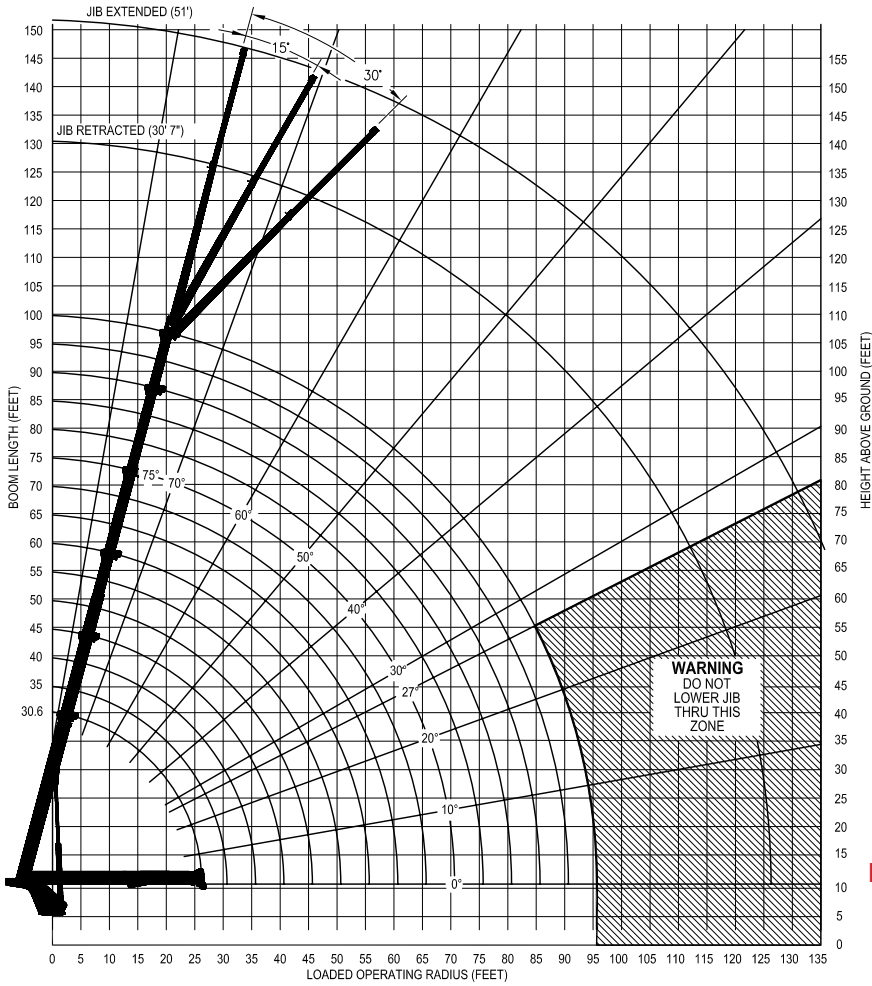


The new Hydra-Lift WHL50TC100 Swing Cab Cranes, with a 50 ton lift rating, is ideally suited for the most demanding heavy lift jobs. Out and down outriggers have independently operated horizontal extension cylinders and vertical jack cylinders, for true stability on uneven surfaces or in tight locations. The fully equipped cab provides the operator with a comfortable working environment in all weather conditions. Mounted on a single steer tri-drive rear axle chassis, or tandem steer tandem rear axle chassis, the WHL50TC100 Crane delivers heavy lifting performance.

## Features:

- 50 Ton lifting capacity
- 110' tip height (fully extended)
- 4 section 100' fully proportional boom
- 30.5' retracted length
- Continuous rotation
- 15,000 lb, 2 speed grooved drum planetary winch with integral brake for high efficiency and security
- Out and down outriggers
- Dual Fan oil cooler
- High strength box construction, welded booms for maximum strength to weight ratio
- A2B and LMI systems
- Optional Equipment:
  - Orientable (0°, 15°, 30°) swing around jib, stows on side of boom
  - Snatch block and crane blocks for multi-part line operation
  - Hydraulic tank heater
  - Digital radio weight indicator
  - Boom lights

# WHL50TC100 - LOAD OPERATING RADIUS (FEET)



MAXIMUM RATED LOAD IN LBS. WITH OUTRIGGERS AT FULL SPREAD												
30'7"/51' TELESCOPIC ORIENTABLE JIB												
LOADED OPERATING RADIUS	RETRACTED JIB						EXTENDED JIB					
	0° OFFSET		15° OFFSET		30° OFFSET		0° OFFSET		15° OFFSET		30° OFFSET	
	LOADED BOOM ANGLE	LOAD	LOADED BOOM ANGLE	LOAD	LOADED BOOM ANGLE	LOAD	LOADED BOOM ANGLE	LOAD	LOADED BOOM ANGLE	LOAD	LOADED BOOM ANGLE	LOAD
FEET	Δ°	LB	Δ°	LB	Δ°	LB	Δ°	LB	Δ°	LB	Δ°	LB
40	70	8,500										
45	68	8,320	71	7,600	74	5,900	71	5,600				
50	65	7,800	69	7,150	72	5,900	69	5,600	74	4,550		
55	63	7,300	66	6,700	68	5,700	67	5,600	72	4,300		
60	61	6,800	64	6,300	67	5,550	65	5,300	70	4,100	74	3,350
65	58	6,350	61	5,900	64	5,350	63	4,950	68	3,900	72	3,250
70	55	5,700	59	5,550	61	5,200	61	4,700	65	3,750	70	3,150
75	53	5,350	56	5,100	59	4,850	58	4,400	63	3,550	67	3,050
80	50	4,850	53	4,550	56	4,600	56	4,150	61	3,450	65	2,950
85	47	4,400	50	4,100	53	4,100	54	3,950	59	3,300	63	2,850
90	44	4,000	47	3,700	49	3,550	51	3,750	56	3,150	60	2,800
95	41	3,850	44	3,550	46	3,200	49	3,550	54	3,050	57	2,700
100	37	3,350	40	3,000	42	2,800	46	3,350	51	2,950	55	2,650
105	33	2,900	36	2,650	38	2,450	44	3,150	48	2,850	52	2,600
110	28	2,400	32	2,400	33	2,150	41	2,900	45	2,750	49	2,550
115			27	2,050	28	1,900	38	2,750	42	2,670	46	2,500
120							35	2,550	39	2,500	42	2,450
125									36	2,350	38	2,350
130									32	2,100	34	2,100
135									27	1,800	28	1,800

RATINGS ABOVE THE HEAVY LINE ARE BASED ON STRUCTURAL COMPETENCE AND NOT ON MACHINE STABILITY.

**NOTE:** Deductions must be made from rated loads for lifting accessories: Fixed jibs, telescopic jibs, overhaul balls, load hooks, snatch blocks and load blocks.

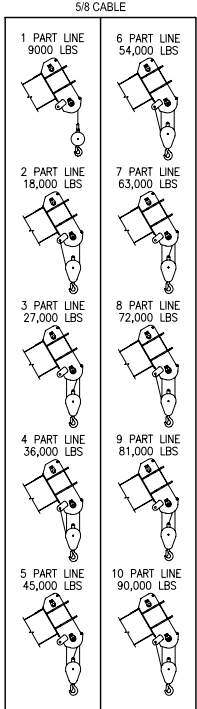
MAXIMUM RATED LOAD IN LBS. WITH OUTRIGGERS AT FULL SPREAD													
LOADED OPERATING RADIUS	LOADED BOOM ANGLE	RETRACTED BOOM LENGTH		BOOM LENGTH		BOOM LENGTH		BOOM LENGTH		EXTENDED BOOM LENGTH			
		FEET	Δ°	30'7"	45°	60°	75°	90°	100°	FEET	Δ°		
5	73	100,000											
8	67	90,500											
10	63	80,000	72	51,000									
12	58	72,000	69	51,000									
15	51	61,800	65	51,000	72	40,000							
20	37	48,500	58	47,500	67	38,000	71	27,500					
25	17	30,000	50	38,900	61	30,500	67	24,500	71	24,300	75	18,000	
30			41	29,500	56	27,250	63	21,500	69	21,300	70	17,500	
35			30	24,600	50	24,200	59	19,100	65	19,100	67	16,250	
40			11	20,700	43	21,200	54	17,000	61	17,000	64	14,700	
45					35	17,500	49	15,250	57	15,250	61	13,300	
50					26	14,900	44	13,800	53	13,800	57	12,150	
55					13	12,300	38	12,400	49	12,600	54	11,100	
60							31	10,500	45	10,700	50	10,200	
65							23	9,000	40	9,200	46	9,100	
70							35	8,000	42	7,900			
75							29	6,800	36	6,900			
80							21	6,000					
85									27	5,200			
90										20	4,600		

RATINGS ABOVE THE HEAVY LINE ARE BASED ON STRUCTURAL COMPETENCE NOT ON STABILITY.

MAXIMUM RATED LOAD IN LBS. WITH INTERMEDIATE SPREAD OUTRIGGERS													
LOADED OPERATING RADIUS	LOADED BOOM ANGLE	RETRACTED BOOM LENGTH		BOOM LENGTH		BOOM LENGTH		BOOM LENGTH		EXTENDED BOOM LENGTH			
		FEET	Δ°	30'7"	45°	60°	75°	90°	100°	FEET	Δ°		
5	73	100,000											
8	67	90,500											
10	63	80,000	72	51,000									
12	58	72,000	69	51,000									
15	51	61,800	65	51,000	72	40,000							
20	37	34,400	58	35,700	67	35,500	71	27,500					
25	17	22,500	50	23,500	61	25,900	67	24,100	71	24,300	75	18,000	
30			41	16,900	56	17,400	63	17,500	68	17,600	70	17,500	
35			30	12,700	50	13,200	59	13,400	65	13,700	67	13,400	
40			11	9,800	43	10,200	54	10,400	61	10,600	64	10,600	
45					35	8,100	49	8,300	57	8,500	61	8,500	
50					26	6,500	44	6,700	53	6,800	57	6,700	
55					13	5,300	38	5,400	49	5,600	54	5,600	
60							31	4,400	45	4,600	50	4,500	
65							23	3,500	40	3,700	46	3,600	
70							35	3,000	42	2,900			
75							29	2,400	36	2,400			
80							21	1,900	27	1,900			
85									27	1,400			
90										20	1,000		

DEDUCTIONS: STOWED JIB

### MAXIMUM LOADS



Parts	Maximum Load (LBS)
1 PART LINE	9,000
2 PART LINE	18,000
3 PART LINE	27,000
4 PART LINE	36,000
5 PART LINE	45,000
6 PART LINE	54,000
7 PART LINE	63,000
8 PART LINE	72,000
9 PART LINE	81,000
10 PART LINE	90,000