



## WHL40TC75/97

The Weldco WHL40TC line of cranes offers a three-section 75 ft fully proportional boom or a four-section 97 ft fully proportional boom. The tapered rear sub frame is compatible with a fifth wheel installation, allowing the operator the ability to haul material directly to and from the job-site. A comfortable and fully equipped operator swing-cab is standard equipment.

### Features:

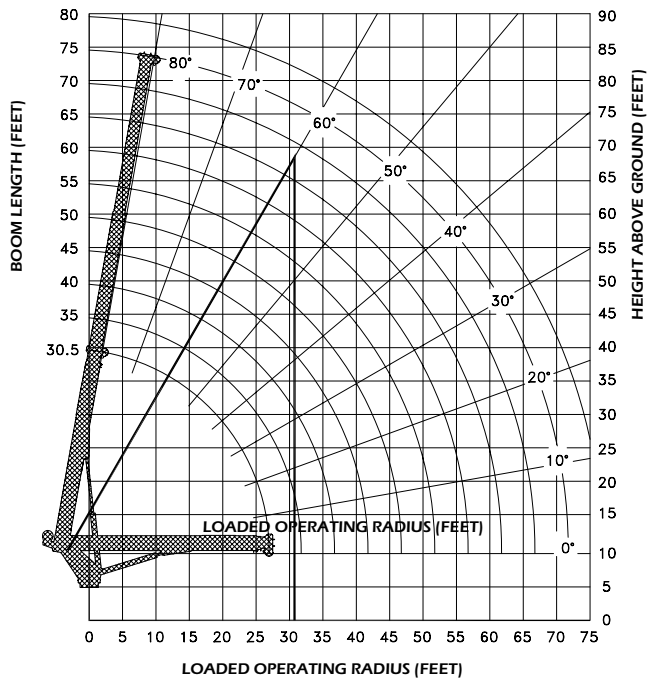
- ▶ 40 Ton lifting capacity
- ▶ 85' - 105' tip height (fully extended)
- ▶ 3 section 75' fully proportional boom (WHL40TC75)
- ▶ 4 section 97' fully proportional boom (WHL40TC97)
- ▶ 30' retracted length
- ▶ Continuous rotation
- ▶ 15,000 lb, 2 speed grooved drum planetary winch with integral brake
- ▶ Tapered rear subframe for fifth wheel installation
- ▶ Out and down outriggers
- ▶ Oil cooler
- ▶ High strength box construction, welded booms for maximum strength to weight ratio

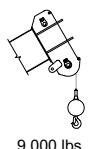
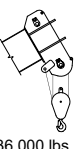
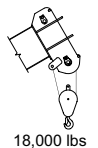
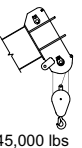
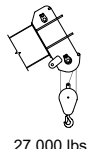
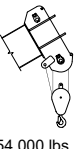
# WHL40TC75 - LOAD OPERATING RADIUS (FEET)

MAXIMUM RATED LOAD IN LBS. WITH OUTRIGGERS FULLY EXTENDED												
LOADED OPERATING RADIUS	LOADED BOOM ANGLE	RETRACTED BOOM LENGTH	LOADED BOOM ANGLE	BOOM LENGTH	LOADED BOOM ANGLE	BOOM LENGTH	LOADED BOOM ANGLE	BOOM LENGTH	LOADED BOOM ANGLE	BOOM LENGTH	LOADED BOOM ANGLE	EXTENDED BOOM LENGTH
FEET	^	30' 2"	^	35 ft	^	45 ft	^	55 ft	^	65 ft	^	74' 8"
5	75	80,000										
8	69	71,000	72	45,000								
10	65	65,000	68	45,000	73	50,000	76	45,000				
12	60	58,000	65	45,000	71	50,000	74	45,000	77	35,000		
15	54	46,000	59	42,500	66	44,000	71	38,000	74	32,000	76	30,000
20	40	33,500	49	32,800	59	33,500	65	32,000	69	29,000	72	26,000
25	21	25,500	37	25,600	52	26,000	60	25,000	65	23,000	68	22,000
30			21	20,100	43	21,000	53	20,000	60	19,500	64	19,000
35					32	17,000	46	17,000	54	16,000	59	15,500
40					17	14,000	39	14,000	49	13,500	55	13,500
45							29	12,000	42	12,000	50	12,000
50							15	10,500	35	10,500	45	10,500
55									27	9,000	39	9,000
60									14	8,000	33	8,000
65											24	7,000
70											12	6,500

RATINGS ABOVE THE HEAVY LINE ARE BASED ON STRUCTURAL COMPETENCE AND NOT ON MACHINE STABILITY.

**NOTE:** Deductions must be made from rated loads for lifting accessories: Fixed jibs, telescopic jibs, overhaul balls, load hooks, snatch blocks and load blocks.



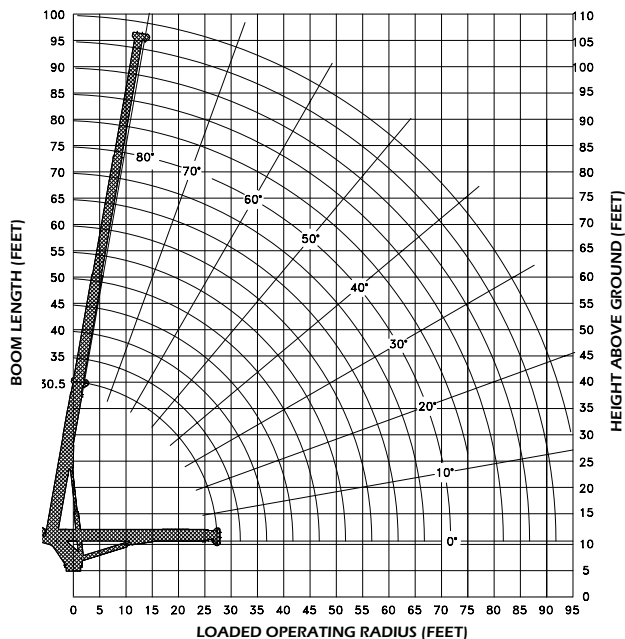
Maximum Loads 5/8" Cable	
 1 Part Line 9,000 lbs	 4 Part Line 36,000 lbs
 2 Part Line 18,000 lbs	 5 Part Line 45,000 lbs
 3 Part Line 27,000 lbs	 6 Part Line 54,000 lbs

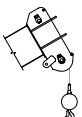
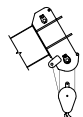
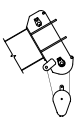
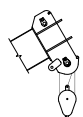
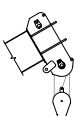
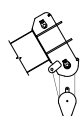
# WHL40TC97 - LOAD OPERATING RADIUS (FEET)

MAXIMUM RATED LOAD IN LBS. WITH OUTRIGGERS FULLY EXTENDED													
LOADED OPERATING RADIUS	LOADED BOOM ANGLE	RETRACTED BOOM LENGTH	LOADED BOOM ANGLE	BOOM LENGTH	LOADED BOOM ANGLE	BOOM LENGTH	LOADED BOOM ANGLE	BOOM LENGTH	LOADED BOOM ANGLE	BOOM LENGTH	LOADED BOOM ANGLE	BOOM LENGTH	EXTENDED BOOM LENGTH
FEET	^	30' 2"	^	45 ft	^	60 ft	^	75 ft	^	90 ft	^	96' 11"	
5	75	80,000											
8	69	71,000	76	45,000									
10	65	63,500	73	45,000	78	38,000							
12	60	56,000	71	44,500	76	35,000	78	29,000					
15	54	45,600	66	40,300	73	32,000	76	27,000	78	21,000	78	20,000	
20	40	32,300	59	32,800	68	27,000	72	23,000	76	19,000	76	18,000	
25	21	24,350	52	25,600	62	24,000	68	18,000	72	17,000	73	15,000	
30			43	20,100	56	19,500	64	16,000	69	15,000	70	13,500	
35			32	16,100	51	14,785	59	13,000	65	12,000	67	12,000	
40			16	13,200	44	11,770	55	11,000	62	11,000	64	10,000	
45					37	9,700	50	9,000	58	9,000	60	8,900	
50					28	8,200	45	7,600	54	7,200	57	7,000	
55					14	7,000	39	6,200	50	6,000	53	6,000	
60							33	5,500	46	5,200	49	5,000	
65							24	4,800	41	4,500	45	4,300	
70									36	3,900	41	3,700	
75									30	3,400	36	3,200	
80									23	2,900	31	2,800	
85											25	2,400	
90											17	1,700	

RATINGS ABOVE THE HEAVY LINE ARE BASED ON STRUCTURAL COMPETENCE AND NOT ON MACHINE STABILITY.

**NOTE:** Deductions must be made from rated loads for lifting accessories: Fixed jibs, telescopic jibs, overhaul balls, load hooks, snatch blocks and load blocks.



Maximum Loads 5/8" Cable	
1 Part Line  9,000 lbs	4 Part Line  36,000 lbs
2 Part Line  18,000 lbs	5 Part Line  45,000 lbs
3 Part Line  27,000 lbs	6 Part Line  54,000 lbs