



WHL23TC60/75/100

Our mid-range crane, the WHL 23TC is popular in a wide range of industries that appreciate its durable and rugged design. This model shares the popular hydraulic control console and components with our classic HL 30TC cranes.

Features:

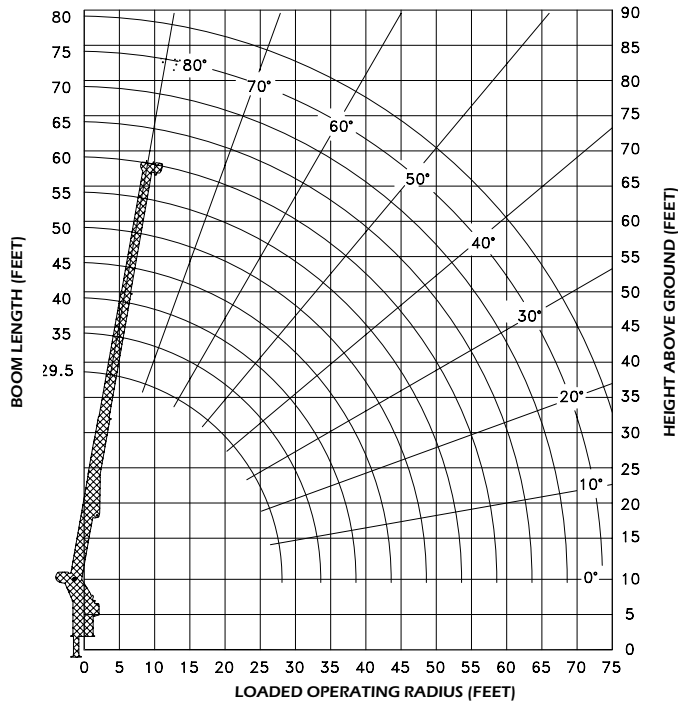
- ▶ 46,000 lb lifting capacity
- ▶ 60', 75', 100' sheave heights
- ▶ 12,000 lb planetary winch
- ▶ Optional continuous rotation
- ▶ External drive swing box with eccentric ring backlash adjustment
- ▶ Load moment indicator (LMI) and shutdown system available to prevent overloading of the crane
- ▶ Available digital wireless weight indicator to inform the operator what the load is

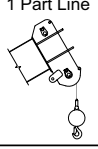
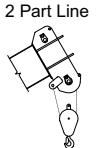
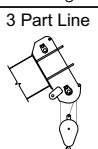
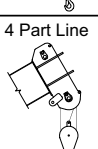
WHL23TC60 - LOAD OPERATING RADIUS (FEET)

| MAXIMUM RATED LOAD IN LBS. WITH OUTRIGGERS FULLY EXTENDED | | | | | | | | | | |
|-----------------------------------------------------------|-------------------|-----------------------|-------------------|-------------|-------------------|-------------|-------------------|-------------|-------------------|-------------|
| LOADED OPERATING RADIUS | LOADED BOOM ANGLE | RETRACTED BOOM LENGTH | LOADED BOOM ANGLE | BOOM LENGTH | LOADED BOOM ANGLE | BOOM LENGTH | LOADED BOOM ANGLE | BOOM LENGTH | LOADED BOOM ANGLE | BOOM LENGTH |
| FEET | [°] | 24' 6" | [°] | 35 ft | [°] | 45 ft | [°] | 55 ft | [°] | 59' 6" |
| 5 | 79 | 46,000 | | | | | | | | |
| 8 | 71 | 35,000 | | | | | | | | |
| 10 | 66 | 30,000 | 74 | 24,000 | 77 | 22,000 | | | | |
| 12 | 61 | 25,000 | 70 | 21,000 | 75 | 19,000 | 77 | 18,000 | | |
| 15 | 52 | 20,000 | 65 | 18,000 | 71 | 16,000 | 74 | 15,000 | 75 | 14,000 |
| 20 | 33 | 15,000 | 55 | 13,500 | 64 | 12,500 | 69 | 12,000 | 70 | 11,000 |
| 25 | | | 44 | 11,000 | 56 | 10,000 | 63 | 9,500 | 65 | 9,000 |
| 30 | | | 29 | 9,000 | 48 | 8,000 | 57 | 7,500 | 59 | 7,500 |
| 35 | | | | | 38 | 6,500 | 50 | 6,500 | 53 | 6,500 |
| 40 | | | | | 25 | 5,500 | 43 | 5,500 | 47 | 5,500 |
| 45 | | | | | | | 34 | 4,500 | 40 | 4,500 |
| 50 | | | | | | | 23 | 4,000 | 31 | 4,000 |
| 55 | | | | | | | | | 20 | 3,500 |

RATINGS ABOVE THE HEAVY LINE ARE BASE ON STRUCTURAL COMPETENCE. RATINGS BELOW THE HEAVY LINE ARE BASE ON MACHINE STABILITY AND DO NOT EXCEED 85% OF TIPPING.

NOTE: Deductions must be made from rated loads for lifting accessories: Fixed jibs, telescopic jibs, overhaul balls, load hooks, snatch blocks and load blocks.



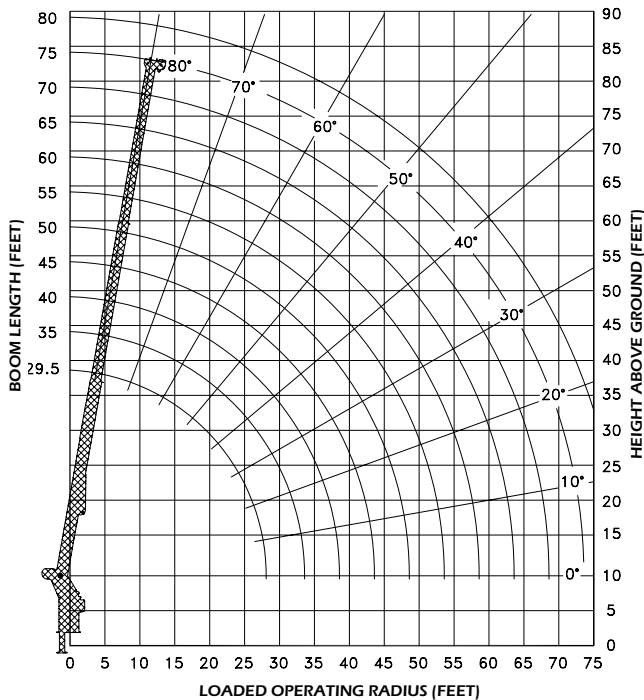
| Maximum Load (lbs) 9/16 Cable | |
|------------------------------------------------------------------------------------------------------|--------|
| 1 Part Line  | 6,000 |
| 2 Part Line  | 12,000 |
| 3 Part Line  | 18,000 |
| 4 Part Line  | 24,000 |

WHL23TC75 - LOAD OPERATING RADIUS (FEET)

| MAXIMUM RATED LOAD IN LBS. WITH OUTRIGGERS FULLY EXTENDED | | | | | | | | | | | | |
|-----------------------------------------------------------|-------------------|-----------------------|-------------------|-------------|-------------------|-------------|-------------------|-------------|-------------------|-------------|-------------------|----------------------|
| LOADED OPERATING RADIUS | LOADED BOOM ANGLE | RETRACTED BOOM LENGTH | LOADED BOOM ANGLE | BOOM LENGTH | LOADED BOOM ANGLE | BOOM LENGTH | LOADED BOOM ANGLE | BOOM LENGTH | LOADED BOOM ANGLE | BOOM LENGTH | LOADED BOOM ANGLE | EXTENDED BOOM LENGTH |
| FEET | ° | 29' 6" | ° | 40 ft | ° | 50 ft | ° | 60 ft | ° | 70 FT | ° | 74' 6" |
| 5 | 80 | 46,000 | | | | | | | | | | |
| 8 | 74 | 34,500 | 79 | 24,000 | | | | | | | | |
| 10 | 70 | 30,000 | 76 | 24,000 | 79 | 24,000 | | | | | | |
| 12 | 66 | 25,000 | 73 | 24,000 | 76 | 22,000 | 79 | 20,000 | | | | |
| 15 | 59 | 22,000 | 68 | 22,000 | 73 | 19,000 | 76 | 17,500 | 78 | 16,000 | 78 | 15,000 |
| 20 | 47 | 16,500 | 60 | 16,500 | 66 | 16,000 | 71 | 14,500 | 73 | 13,500 | 75 | 13,000 |
| 25 | 30 | 13,000 | 51 | 13,000 | 60 | 12,000 | 65 | 11,000 | 69 | 10,500 | 70 | 10,000 |
| 30 | | | 41 | 10,500 | 53 | 10,000 | 60 | 9,500 | 65 | 9,000 | 66 | 8,500 |
| 35 | | | 27 | 8,500 | 45 | 8,000 | 54 | 7,500 | 60 | 7,500 | 62 | 7,000 |
| 40 | | | | | 37 | 7,000 | 48 | 6,500 | 56 | 6,500 | 58 | 6,500 |
| 45 | | | | | 25 | 5,500 | 42 | 5,500 | 50 | 5,500 | 53 | 5,500 |
| 50 | | | | | | | 33 | 4,500 | 45 | 4,500 | 48 | 4,500 |
| 55 | | | | | | | 23 | 4,000 | 38 | 4,000 | 43 | 4,000 |
| 60 | | | | | | | | | 31 | 3,200 | 36 | 3,200 |
| 65 | | | | | | | | | 21 | 2,700 | 29 | 2,700 |
| 70 | | | | | | | | | | | 19 | 2,200 |

RATINGS ABOVE THE HEAVY LINE ARE BASE ON STRUCTURAL COMPETENCE AND NOT ON MACHINE STABILITY.

NOTE: Deductions must be made from rated loads for lifting accessories: Fixed jibs, telescopic jibs, overhaul balls, load hooks, snatch blocks and load blocks.



| Maximum Load (lbs) 9/16 Cable | |
|----------------------------------|--------|
| 1 Part Line | 6,000 |
| 2 Part Line | 12,000 |
| 3 Part Line | 18,000 |
| 4 Part Line | 24,000 |

WHL23TC100 - LOAD OPERATING RADIUS (FEET)

| MAXIMUM RATED LOAD IN LBS. WITH OUTRIGGERS FULLY EXTENDED | | | | | | | | | | | | |
|-----------------------------------------------------------|-------------------|-----------------------|-------------------|-------------|-------------------|-------------|-------------------|-------------|-------------------|-------------|-------------------|----------------------|
| LOADED OPERATING RADIUS | LOADED BOOM ANGLE | RETRACTED BOOM LENGTH | LOADED BOOM ANGLE | BOOM LENGTH | LOADED BOOM ANGLE | BOOM LENGTH | LOADED BOOM ANGLE | BOOM LENGTH | LOADED BOOM ANGLE | BOOM LENGTH | LOADED BOOM ANGLE | EXTENDED BOOM LENGTH |
| FEET | ° | 30' | ° | 45 ft | ° | 60 ft | ° | 75 ft | ° | 90 FT | ° | 100 ft |
| 5 | 80 | 46,000 | | | | | | | | | | |
| 8 | 74 | 33,500 | 80 | 24,000 | | | | | | | | |
| 10 | 70 | 28,200 | 77 | 24,000 | | | | | | | | |
| 12 | 66 | 24,500 | 74 | 23,500 | 78 | 16,000 | | | | | | |
| 15 | 60 | 19,000 | 70 | 17,500 | 75 | 14,200 | 78 | 12,000 | | | | |
| 20 | 47 | 13,750 | 63 | 15,500 | 70 | 13,000 | 74 | 10,000 | 77 | 7,800 | 78 | 7,300 |
| 25 | 31 | 10,500 | 56 | 12,000 | 65 | 10,000 | 70 | 9,000 | 74 | 6,500 | 75 | 6,200 |
| 30 | | | 48 | 9,300 | 60 | 8,500 | 66 | 8,000 | 70 | 6,000 | 73 | 5,700 |
| 35 | | | 39 | 7,300 | 55 | 7,000 | 62 | 6,500 | 67 | 5,800 | 70 | 5,200 |
| 40 | | | 26 | 5,800 | 48 | 5,800 | 58 | 5,200 | 64 | 5,000 | 67 | 4,700 |
| 45 | | | | 4,500 | 44 | 4,500 | 53 | 4,500 | 60 | 4,400 | 63 | 4,200 |
| 50 | | | | 3,500 | 41 | 3,500 | 48 | 3,500 | 56 | 3,500 | 60 | 3,500 |
| 55 | | | | 3,000 | 38 | 3,000 | 43 | 3,200 | 52 | 3,200 | 57 | 3,200 |
| 60 | | | | | 37 | 2,500 | 48 | 2,500 | 53 | 2,500 | 53 | 2,500 |
| 65 | | | | | 30 | 2,100 | 44 | 2,200 | 50 | 2,200 | 50 | 2,200 |
| 70 | | | | | 20 | 1,600 | 39 | 1,600 | 46 | 1,600 | 46 | 1,600 |
| 75 | | | | | | | 33 | 1,200 | 41 | 1,200 | 41 | 1,200 |
| 80 | | | | | | | 27 | 1,000 | 37 | 1,000 | 37 | 1,000 |
| 85 | | | | | | | 18 | 600 | 32 | 600 | 32 | 600 |
| 90 | | | | | | | | | 25 | 400 | 25 | 400 |

RATINGS ABOVE THE HEAVY LINE ARE BASE ON STRUCTURAL COMPETENCE AND NOT ON MACHINE STABILITY.

NOTE: Deductions must be made from rated loads for lifting accessories: Fixed jibs, telescopic jibs, overhaul balls, load hooks, snatch blocks and load blocks.

