



## HL30TC70/85/100

A 30 ton lifting capacity and short stowed boom length makes the HL 30TC70/85/100 crane line ideal for heavy work in the oilpatch. HL 30TC cranes can be mounted on either a single or double steering axle chassis.

### Features:

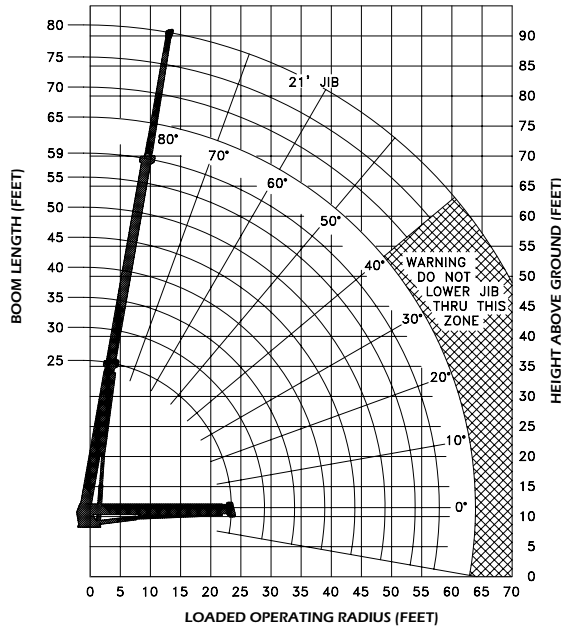
- ▶ 60,000 lbs lifting capacity
- ▶ 70 - 100' sheave heights
- ▶ 25-30' retracted boom length
- ▶ 15,000 lb planetary winch with integral brake
- ▶ 3 section fully proportional boom
- ▶ Optional continuous rotation
- ▶ Planetary drive rotation gear box
- ▶ A-frame link style main outriggers
- ▶ Dual control consoles and platforms
- ▶ High strength box construction, welded booms for maximum strength to weight ratio
- ▶ Standard audible capacity alert system
- ▶ Standard audible outrigger warning alarm

# HL30TC70 - LOAD OPERATING RADIUS (FEET)

MAXIMUM RATED LOAD IN LBS. WITH OUTRIGGERS FULLY EXTENDED												
LOADED OPERATING RADIUS	LOADED BOOM ANGLE	RETRACTED BOOM LENGTH	LOADED BOOM ANGLE	BOOM LENGTH	LOADED BOOM ANGLE	BOOM LENGTH	LOADED BOOM ANGLE	BOOM LENGTH	LOADED BOOM ANGLE	BOOM LENGTH	LOADED BOOM ANGLE	21' JIB ERECTED
FEET	°	25 ft	°	35 ft	°	45 ft	°	55 ft	°	59 ft	°	
5	80	60,000										
8	72	43,000	78	40,500								
10	67	36,500	74	34,500	78	33,000	80	32,000				
12	62	31,900	71	30,100	75	28,600	78	27,500	79	27,000		
14	56	28,500	67	26,500	73	25,400	76	24,300	77	24,100	80	6,650
16	50	25,500	63	24,100	70	22,600	74	21,600	75	21,400	78	6,200
18	44	23,000	59	21,800	67	20,400	71	19,400	73	19,200	76	5,900
20	36	21,000	55	19,900	64	18,600	69	17,700	71	17,400	75	5,500
25			44	16,600	57	15,500	63	14,700	66	14,500	70	4,700
30			29	13,500	48	13,100	57	12,400	60	12,200	67	4,500
35					38	10,000	51	10,700	54	10,500	63	4,200
40					25	8,500	43	9,300	48	9,200	60	3,600
45							35	8,300	41	8,300	55	3,100
50							24	6,900	33	7,200	51	2,600
55									21	6,000	45	2,200
60											41	2,000
Deductions for stowed jib		675 lbs		500 lbs		450 lbs		325 lbs		300 lbs		

RATINGS ABOVE THE HEAVY LINE ARE BASED ON STRUCTURAL COMPETENCE AND NOT ON MACHINE STABILITY.

**NOTE:** Deductions must be made from rated loads for lifting accessories: Fixed jibs, telescopic jibs, overhaul balls, load hooks, snatch blocks and load blocks.



Maximum Load (lbs)	Cable Size (in)	
	9/16	5/8
1 Part Line 	7,500	8,700
2 Part Line 	15,000	17,400
3 Part Line 	22,500	26,100
4 Part Line 	30,000	34,800

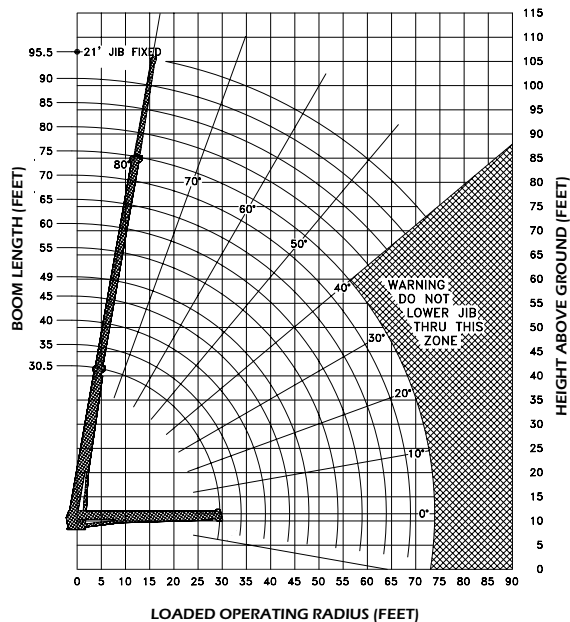
# HL30TC85 - LOAD OPERATING RADIUS (FEET)

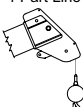
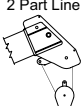
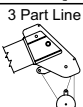
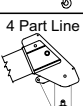
## MAXIMUM RATED LOAD IN LBS. WITH OUTRIGGERS FULLY EXTENDED

LOADED OPERATING RADIUS	LOADED BOOM ANGLE	RETRACTED BOOM LENGTH	LOADED BOOM ANGLE	BOOM LENGTH	LOADED BOOM ANGLE	BOOM LENGTH	LOADED BOOM ANGLE	BOOM LENGTH	LOADED BOOM ANGLE	BOOM LENGTH	LOADED BOOM ANGLE	EXTENDED BOOM LENGTH	LOADED BOOM ANGLE	21' JIB ERECTED
FEET	°	30' 6"	°	40 ft	°	50 ft	°	60 ft	°	70 ft	°	74' 6"	°	95' 9"
5.5	80	60,000												
8	76	47,500	79	45,000										
10	72	40,000	76	37,500	79	36,500								
12	68	34,500	73	32,000	77	32,000	79	31,000						
14	63	30,000	70	28,500	74	27,000	77	27,000	79	26,500				
16	58	27,000	67	25,500	72	24,500	75	24,000	77	23,000	79	23,000		
18	54	23,500	64	23,000	69	22,000	73	21,500	75	20,000	76	20,000	78	7,000
20	49	20,500	61	20,500	67	20,000	71	19,500	74	19,000	75	19,000	77	7,000
25	33	15,500	52	16,000	60	16,000	66	16,000	69	15,000	71	15,000	74	7,000
30			42	12,500	53	12,500	60	12,500	66	12,500	66	12,500	71	7,000
35			28	10,000	46	10,000	55	10,000	60	10,000	62	10,000	68	7,000
40					37	8,500	48	8,500	55	8,500	58	8,500	64	7,000
45					25	7,000	41	7,000	50	7,000	53	7,000	61	7,000
50							33	6,000	44	6,000	48	6,000	57	5,800
55							22	5,000	38	5,000	42	5,000	54	5,000
60									31	4,200	36	4,200	50	4,200
65									21	3,500	29	3,500	46	3,600
70											19	3,000	42	3,000
Deductions for stowed jib		500 lbs		450 lbs		400 lbs		400 lbs		350 lbs		300 lbs		

RATINGS ABOVE THE HEAVY LINE ARE BASED ON STRUCTURAL COMPETENCE AND NOT ON MACHINE STABILITY.

**NOTE:** Deductions must be made from rated loads for lifting accessories: Fixed jibs, telescopic jibs, overhaul balls, load hooks, snatch blocks and load blocks.



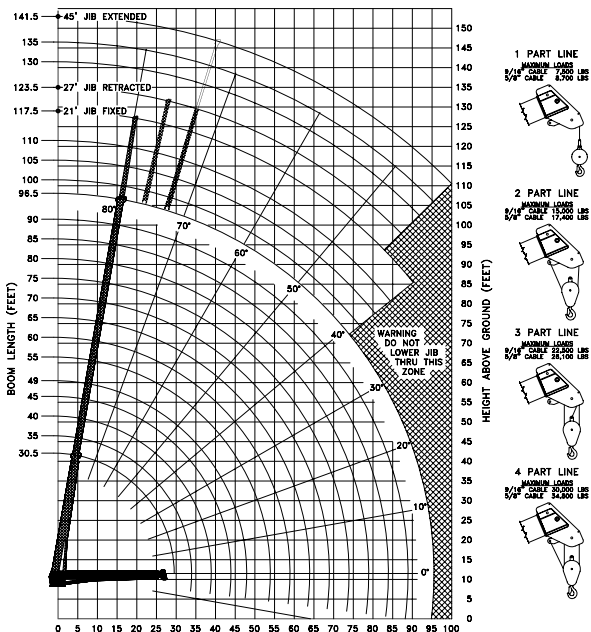
Maximum Load (lbs)	Cable Size (in)	
	9/16	5/8
1 Part Line 	7,500	8,700
2 Part Line 	15,000	17,400
3 Part Line 	22,500	26,100
4 Part Line 	30,000	34,800

# HL30TC100 - LOAD OPERATING RADIUS (FEET)

## MAXIMUM RATED LOAD IN LBS. WITH OUTRIGGERS FULLY EXTENDED

LOADED OPERATING RADIUS	LOADED BOOM ANGLE	RETRACTED BOOM LENGTH	LOADED BOOM ANGLE	BOOM LENGTH	LOADED BOOM ANGLE	BOOM LENGTH	LOADED BOOM ANGLE	BOOM LENGTH	LOADED BOOM ANGLE	BOOM LENGTH	LOADED BOOM ANGLE	EXTENDED BOOM LENGTH	LOADED BOOM ANGLE	EXTENDED BOOM LENGTH	LOADED BOOM ANGLE	EXTENDED BOOM LENGTH
FEET	^°	30'10"	^°	40 ft	^°	50 ft	^°	60 ft	^°	70 ft	^°	80 ft	^°	90 ft	^°	96'10"
5.5	80	60,000														
8	75	45,600	79	41,100												
10	71	37,500	76	34,000	79	33,000	80	30,500								
12	67	32,000	73	29,100	76	28,000	78	27,000								
14	63	28,200	70	25,500	74	24,300	77	23,500	79	23,000	80	22,500				
16	58	24,500	67	23,000	72	21,600	75	21,000	77	20,300	78	20,000	80	19,900		
18	54	22,000	63	20,100	69	19,200	72	18,500	75	18,000	77	17,500	79	17,300	80	17,100
20	49	19,000	60	18,100	67	17,500	70	16,600	74	16,100	76	15,700	77	15,400	78	15,200
25	33	14,500	51	14,400	60	13,900	65	13,000	69	12,800	72	12,500	74	12,250	75	12,100
30			40	11,500	53	11,300	60	10,800	65	10,500	68	10,100	71	10,000	72	9,700
35			26	8,800	45	9,300	54	9,000	60	8,650	64	8,350	67	8,100	69	8,000
40					36	7,500	48	7,500	55	7,250	60	7,200	64	7,000	66	6,900
45					24	5,900	41	6,400	50	6,300	56	6,100	60	5,900	63	5,800
50							33	5,250	45	5,300	51	5,200	56	5,000	59	5,000
55							22	3,900	38	4,450	47	4,400	53	4,300	56	4,250
60									30	3,550	41	3,700	48	3,650	52	3,600
65									20	2,500	35	3,000	44	3,050	48	3,050
70											28	2,350	39	2,550	44	2,550
75											19	1,500	33	2,000	39	2,000
80													27	1,500	34	1,700
85															28	1,200
90																

RATINGS ABOVE THE HEAVY LINE ARE BASED ON STRUCTURAL COMPETENCE AND NOT ON MACHINE STABILITY.



**NOTE:** Deductions must be made from rated loads for lifting accessories: Fixed jibs, telescopic jibs, overhaul balls, load hooks, snatch blocks and load blocks.